

Participants Information - Sessions

Kodály Autumn Music Seminar 8/9 May 2009



At the 2009 Autumn Seminar, **you do not need to** pre sign up for sessions or return this form. However, before you come, you will need to decide which Musicianship group to attend.

The groups are:

- Introductory Group Level One Level Two
 Level Three.1 Level Three.2

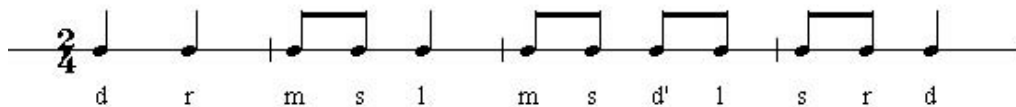
Note: to get the most out of your session, it is advisable to change groups after the first 10 minutes if the the group you have selected is too easy/advanced for you

What Musicianship Level Am I?

Please use these questions to help assess your musicianship/solfa level.

Question 1: I could sing this:

Yes No With handsigns: Yes No



- If you have answered 'No' to both the above questions please select the Introductory Group
- If you have answered 'Yes' and 'No' to the above questions please select Level One
- If you have answered 'Yes' to both the above questions please move on to Question 2

Question 2: I could sing this without reference to an instrument (except to find a starting pitch):

Yes No I could sing it in solfa. Yes No



- If you have answered 'Yes' and 'No' to the above questions please select Level Two
- If you have answered 'Yes' and 'Yes' to the above questions please move on to Question 3

Question 3: I could sing this without reference to an instrument (except to find a starting pitch):

Yes No I could sing it in solfa. Yes No



- If you have answered 'Yes' and 'No' to the above questions please select Level Three.1
- If you have answered 'Yes' and 'Yes' to the above questions please select Level Three.2